

# Using your Tag - Commercial Vehicles

Your Tag will allow you to pass quickly and efficiently through our toll plazas, but only if the Tag is used correctly:-

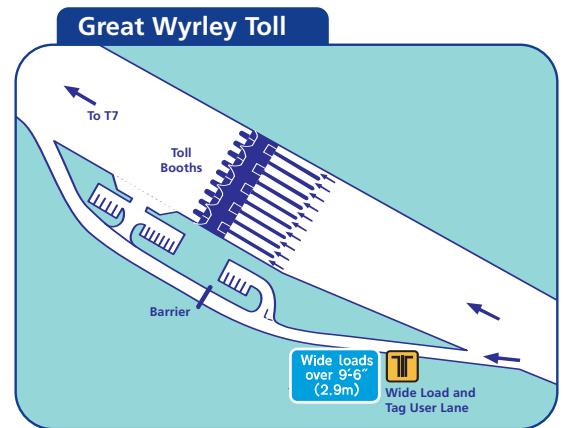
- i) The tag must be installed correctly
- ii) You must use the correct 'Tag' lane at the toll plaza

Please take a few moments to read the details on this leaflet to ensure that your Tag works efficiently at all times. Failure to do so may cause you delays at the toll plaza and inconvenience to you and other customers.

Midland Expressway Ltd cannot guarantee the correct operation of your Tag if you do not fix it permanently in the manner and position described overleaf.

## Mainline Plazas (10 lanes) at Great Wyrley and Weeford Park

On your approach to the Toll Plaza keep FAR LEFT and use the Wide Load Lane - look for the overhead Tag pictogram (as illustrated below)

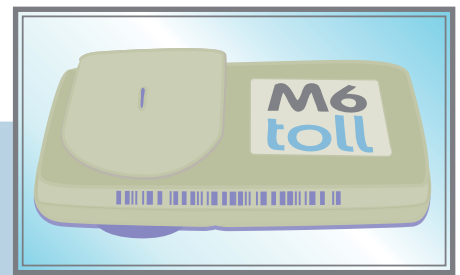


## Ramp Plazas (3 or 4 lanes) junction exits T3, T4, T5 or T6

On your approach to the Toll Plaza use either the FAR RIGHT or FAR LEFT dedicated Tag lanes - look for the overhead Tag pictogram (as illustrated below)



# Where to position your Tag



## Before fitting your Tag

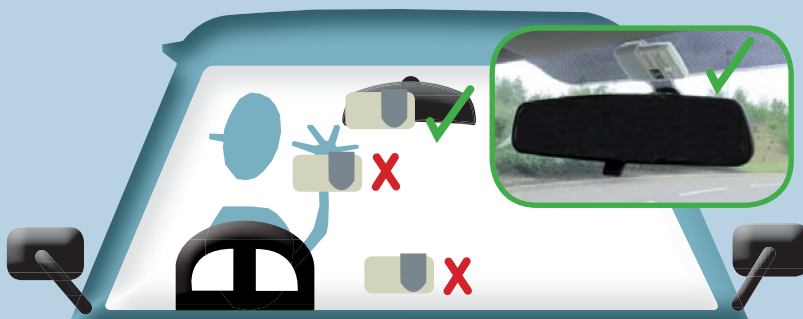
Your Tag may not function correctly if it is:-

- Mounted using the incorrect bracket for your vehicle
- Mounted in the incorrect position for your vehicle
- Held in your hand

Please refer to the below information to determine the correct bracket and positioning of your Tag for your vehicle.

Should you have any queries, please call 0870 850 6262.

## Sloping Windscreens



Cars and Vans generally have sloping windscreens.

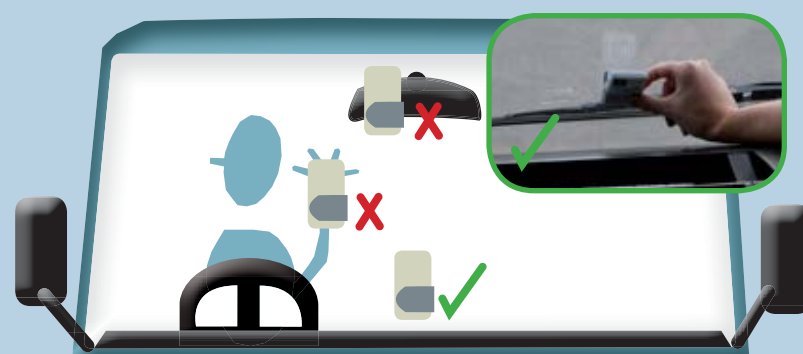
Tags must be mounted using a bracket with a car symbol



The mounting area is usually the dark area above or directly behind the rear view mirror on the windscreen - ensuring there is enough space and no metal from sun visors etc covering the Tag.

Please note: some cars have embedded sensors or metalised windscreens which restrict Tag function on specific models (please consult your vehicle user manual)

## Vertical Windscreens



Vans, Trucks and Buses generally have vertical windscreens.

Tags must be mounted using a bracket with a truck symbol on it.



The mounting area is usually in the centre of the windscreen a few centimetres above the dashboard - ensuring there is enough space and no metal from stone guards, windscreen wipers etc covering the Tag.



[www.m6toll.co.uk](http://www.m6toll.co.uk)  
0870 850 6222  
[twitter@m6tollroad](https://twitter.com/m6tollroad)

